

EliteModels

37in Skylark-S

Kit and PNP Versions



Specifications

Wingspan:37.4in (950mm)

Length:40.5in (1030mm)

Flying Weight: 760g

Dear Customer,

Congratulations on your purchase of Skylark-S Kit from Value Hobby. We thank you for your generous support, and hope you enjoy your new airplane.

At Value Hobby, we hope to offer competitive prices, good performance, and products that you can setup and use with ease. That's why we extensively researched and tested this airplane, and suggested all the products necessary for you to setup properly. We understand that you have many choices when purchasing, and we are grateful you choose to buy from us.

As vendors, one of the most gratifying things for us is to hear from our customers. We would welcome any suggestion to help us improve. Please make us aware of any errors and imperfections in the airplane or the instructions, or about the setup that we suggested. We hope you'll find our setup suggestions to be helpful, and enjoy flying your new airplane. Please feel free to contact us at (630) 948-0947 or email us at support@valuehobby.com

Disclaimer

By purchasing and/or building this model, user assumes ALL liability and risk involved with this product. This model should be built and flown by an experienced pilot and only flown at AMA sanctioned sites.

Value Hobby guarantees this model to be free of defects in materials and workmanship at the date of purchase. This warranty does not cover any parts damaged by use or modifications. In no way shall Value Hobby's liability exceed the original cost of the purchased model. Further, Value Hobby reserves the right to modify this warranty without notice. Value Hobby has no control over the final stages of assembly or the material used for the final assembly. No liability shall be assumed nor materials used for the final user-assembled product. By the act of using the final product the user accepts all resulting liability. Value Hobby, as a R/C product vendor, provides a top-quality airplane and instructions to complete the model. The quality and flight characteristics of the finished model depend greatly on how it is built; we cannot guarantee the performance for the completed model and representations are expressed or implied as to the performance of the completed model. If the buyer is not prepared to accept the liability associated with the use of this product, the buyer is advised to return this kit immediately, in new and unused condition.

Safety in Assembly

During assembly of this airplane, you will be asked to use sharp knives and hobby adhesives. Please follow all safety procedures recommended by the manufacturers of the products you use, and always follow these important guidelines: ALWAYS protect your eyes when working with adhesives, knives, or tools, especially power tools. Safety glasses are the best way to protect your eyes. ALWAYS protect your body, especially your hands and fingers when using adhesives, knives, or tools, especially power tools. Do not cut toward exposed skin with hobby knives. Do not place hobby knives on tables or benches where they can roll off or be knocked off. ALWAYS have a first-aid kit handy when working with adhesives, knives, or tools, especially power tools. ALWAYS keep hobby equipment and supplies out of the reach of children.

Safety in Flying

This is NOT a toy! It is a very high-performance RC airplane capable of high speeds and extreme maneuvers. It should only be operated by a competent pilot in a safe area with proper supervision. ONLY fly your airplane in a safe, open area, away from spectators and vehicles—and where it is legal to fly. NEVER fly over an unsafe area, such as a road or street. Never fly too close to yourself or spectators.

Never run your motor inside a house or building with the propeller attached – Remove the prop for safety.

Required Items

Foam Safe Glue

Hobby Knife

Small Phillips Screwdriver

Set Metric Allen Wrenches

Scissors

Small Pliers

Wire Cutters

Before Starting Assembly

Unpack your airplane and examine the components. Check for damage of any kind. If you see any damage, please contact Value Hobby immediately.

Airframe Parts



1. Fuselage
2. Left and right wing
3. Elevator
4. Vertical fin
5. Carbon fiber tube
6. PU tire
7. Landing gear wire

- 8. Part bag
- 9. Propeller
- 10. Wheel housing

RECOMMENDED EQUIPMENT

Product	SKU	Quantity
FrSky Taranis Q X7 Transmitter	FRY-RC-5938	1
GForce Elite Series 2200mAh 3S LiPO	FLM-LP-1874	1
Imax B6 Balance Charger w/ Power Supply	IMX-CH-5458	1
GForce E450 Brushless Motor (2835-1200KV)*	VHB-MT-5297	1
GForce 40A Brushless ESC*	VHB-SC-4494	1
Towerpro SG90*	TWP-SV-3214	4

*Required for kit version only. Not required for PNP version.

Secure the PU tire into wheel housing with landing gear wire.



Install the assembled landing gear into the pre-cut slot on the bottom of fuselage.



Then secure it with fixed wooden plate and screws.



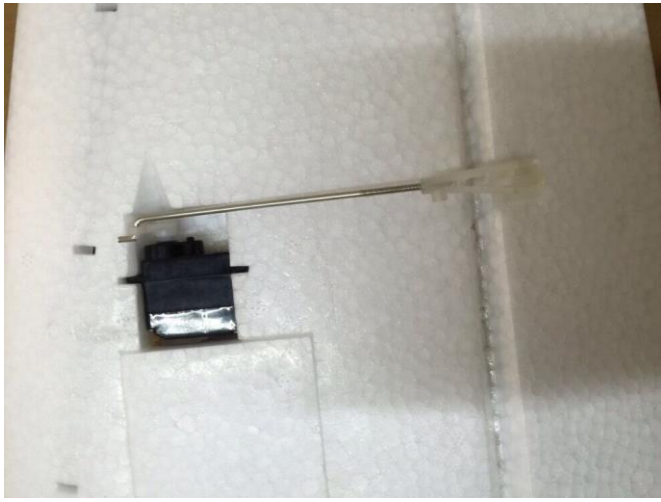
Insert main wing into the fuselage.



Secure the wing on the fuselage with the rubber O-ring.



KIT version only: Secure control horn on the aileron with foam safe glue. Install Z-bend wire into the hole of the control horn. Connect control horn to the servo on the aileron. Clip the control horn into the control horn clip.



Use some foam safe glue to secure the elevator into the pro-cut slots on the tail of fuselage



Secure the rudder into the slot on the fuselage with foam safe glue



KIT version only: Secure control horn on the elevator. Install Z-bend wire into the hole of clear control horn clip. Connect control horn clip to the servo on the elevator. Clip the control horn into the control horn clip.



KIT version only: Install Z-bend wire into the hole of clear control horn clip. Connect control horn clip to the servo on the rudder. Clip the control horn into the control horn clip.



KIT version only: Locate a E450 size or similar brushless motor. Secure it into the fuselage with four screws.



KIT version only: Connect 40A ESC to your motor.



Connect your ESC to the battery.

The CG should be 110mm (4.3-4.4in) from the leading edge of the wing.

